

Tribander RevA.1 Addendum

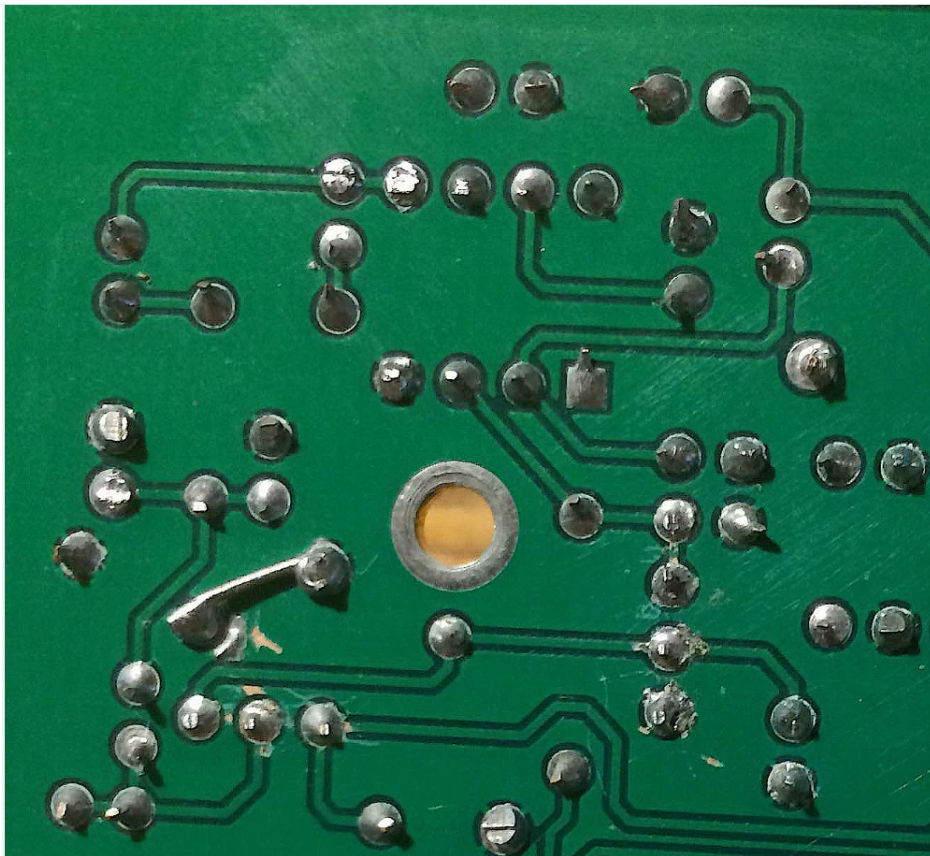
On our Tribander kits with a RevA.1 circuit board, there is a small modification that is needed in order for the audio chain to work correctly.

One pad of R18 located in the lower left quadrant of the board just adjacent to Q9 was left ungrounded and needs to be connected to ground. This pad also has a trace right next to it but is not connected to the trace.

This the leftmost pad of R18as you look at the board from the top with the front side toward you.

Our recommended way to accomplish this is to add a wire between the unconnected pad of R18 and the adjacent, grounded pad of R25 as shown in the photo below. As these pads are grounded anyway, the wire does not need to be insulated from the surrounding groundplane.

The easiest way is just use the excess lead from either R18 or R25 and bend it over to reach the other pad. The photo below shows the location of the wire.



Please contact us if we can help clarify how to implement this.

Please Note that this only applies to the boards labeled: RevA.1, not previous versions.