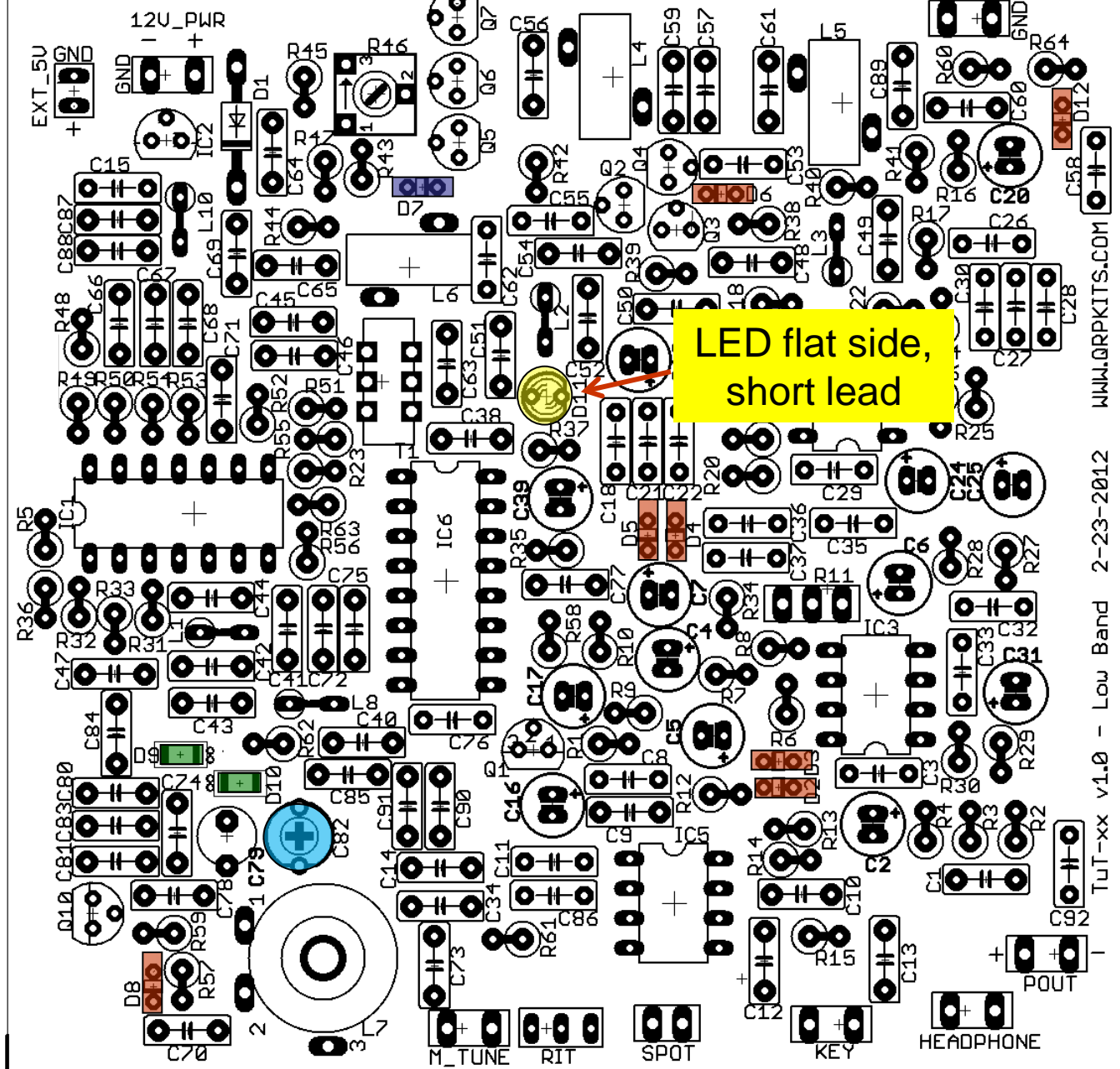


Ft Tuthill DC CW Xcvr - Low Band

ANT



40 pf trim cap

1N5262B

LED

1N4148

Already Installed

LED flat side, short lead

WWW.QRPKITS.COM

TuT-xx v1.0 - Low Band 2-23-2012

Ft Tuthill DC CW Xcvr - Low Band

0.1 uf

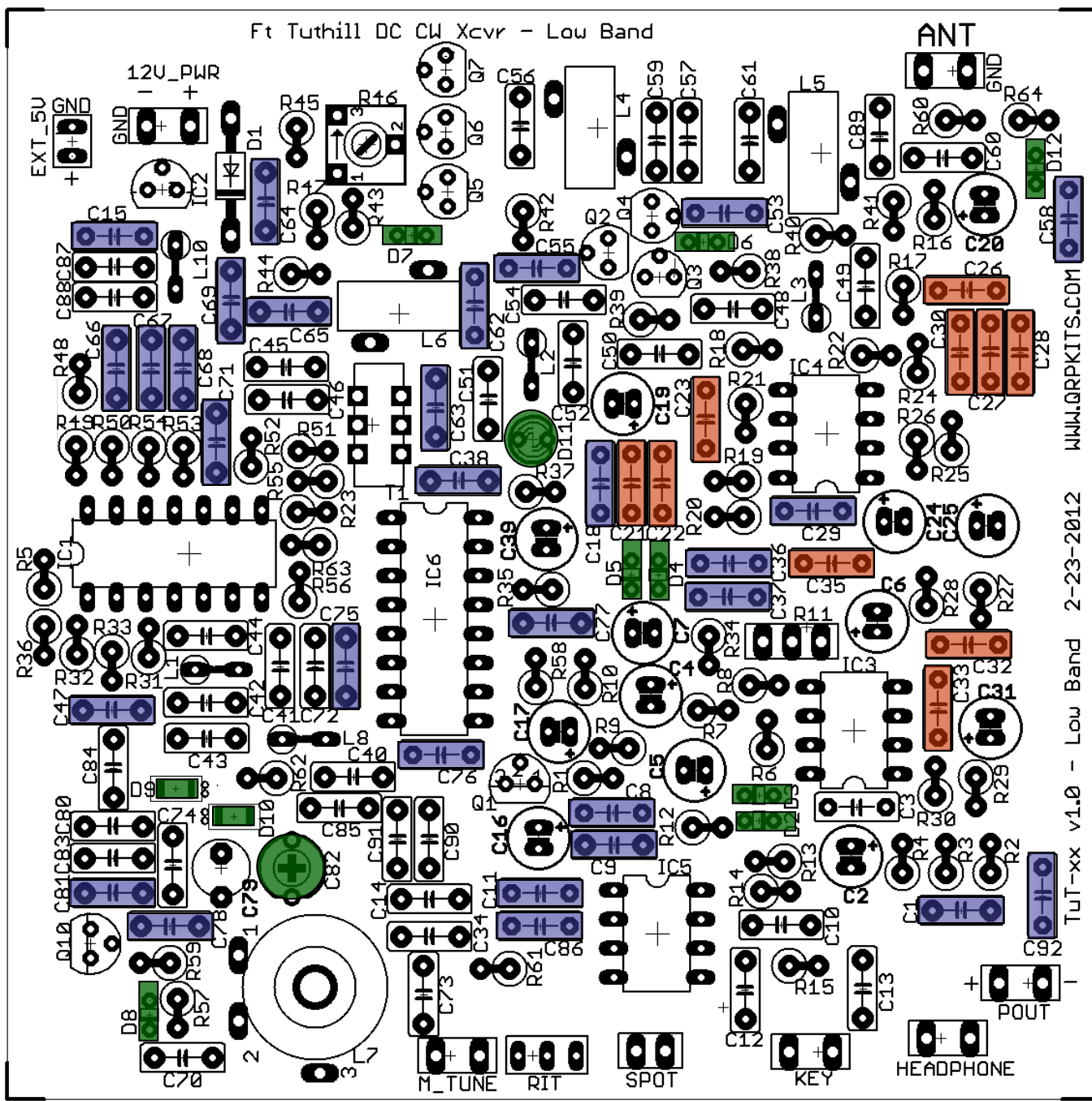


Matched Filter Caps

0.1 uf



Already Installed



WWW.QRPKITS.COM

TuT-xx v1.0 - Low Band 2-23-2012

ANT

HEADPHONE
POUT

EXT_5U

12U_PWR

R5

R36

C47

C84

C81

C83

C80

GND

D1

R48

R45

R43

R44

R46

R47

R42

R41

R40

R39

R38

+

+

+

+

+

+

+

+

+

+

+

+

+

+

+

+

+

+

+

+

+

+

+

+

+

+

+

+

+

+

+

+

+

+

+

+

+

+

+

+

+

+

+

+

+

+

+

+

+

+

+

+

+

+

+

+

+

+

+

+

+

+

+

+

+

+

+

+

+

+

+

+

+

+

+

+

+

+

+

+

+

+

+

+

+

+

+

+

+

+

+

+

+

+

+

+

+

+

+

+

+

+

+

+

+

+

+

+

+

+

+

+

+

+

+

+

+

+

+

+

+

+

+

+

+

+

+

+

+

+

+

+

+

+

+

+

+

+

+

+

+

+

+

+

+

+

+

+

+

+

+

+

+

+

+

+

+

+

+

+

+

+

+

+

+

+

+

+

+

+

+

+

+

+

+

+

+

+

+

+

+

+

+

+

+

+

+

+

+

+

+

+

+

+

+

+

+

+

+

+

+

+

+

+

+

+

+

+

+

+

+

+

+

+

+

+

+

+

+

+

+

+

+

+

+

+

+

+

+

+

+

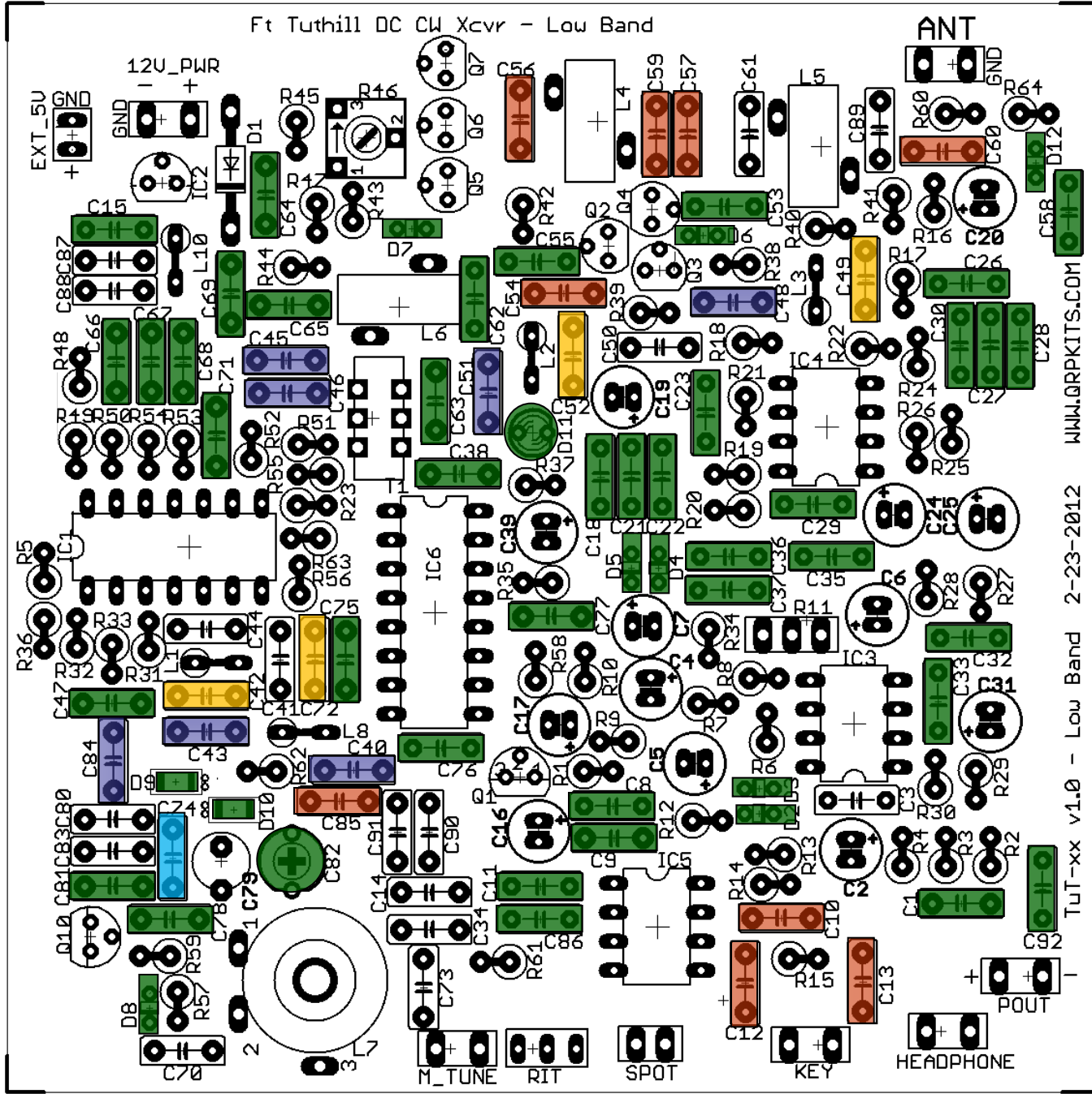
+

+

+

Ft Tuthill DC CW Xcvr - Low Band

100 pF
150 pF
180 pF
2200 pF
Already Installed



TuT-xx v1.0 - Low Band 2-23-2012

WWW.QRPKITS.COM

ANT

POUT

HEADPHONE

KEY

SPOT

RIT

M_TUNE

Ft Tuthill DC CW Xcvr - Low Band

ANT

33 pF



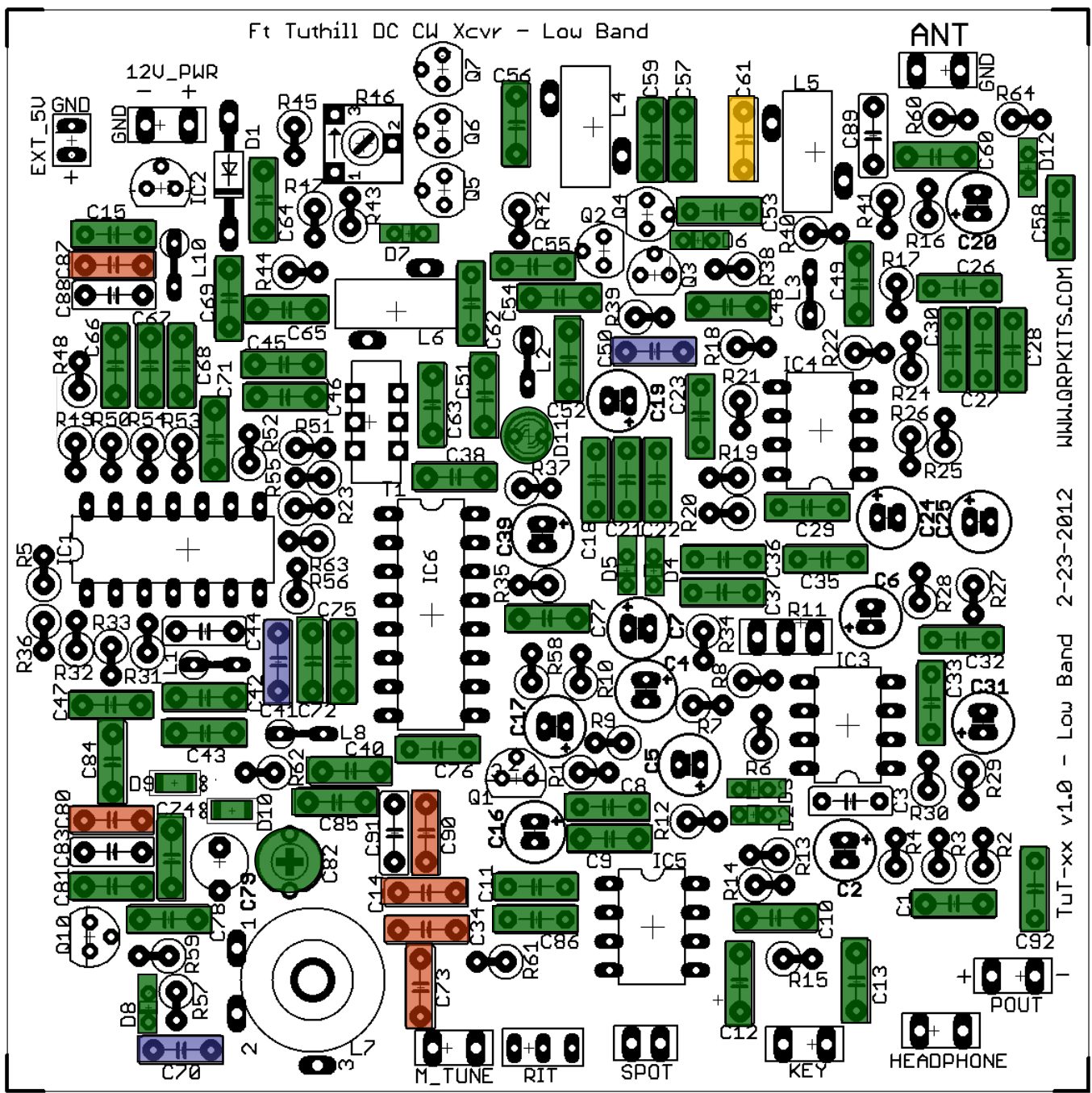
270 pF



820 pF



Already Installed

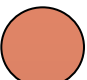


WWW.QRPKITS.COM

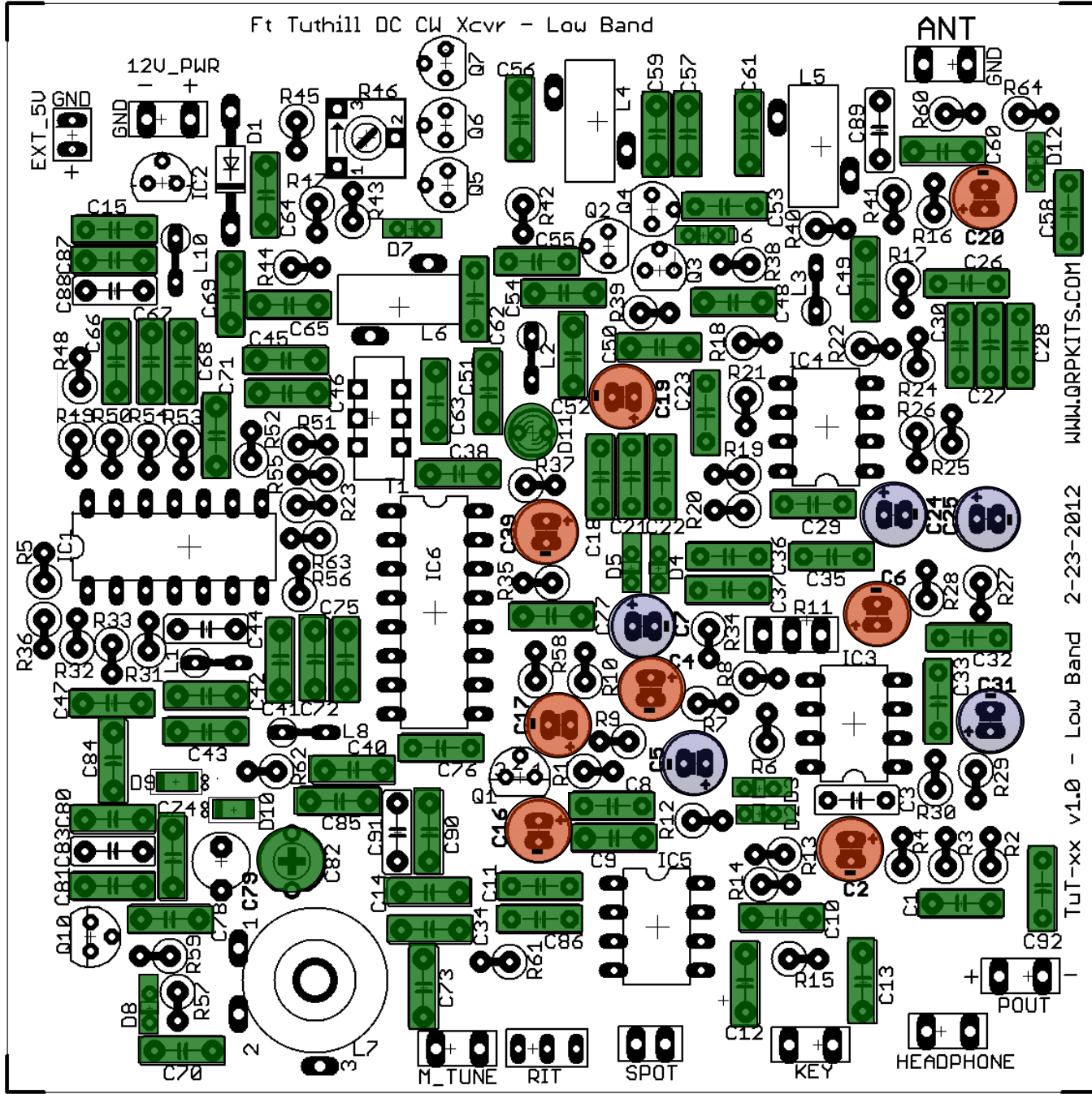
TuT-xx v1.0 - Low Band 2-23-2012

Ft Tuthill DC CW Xcvr - Low Band

 2.2 uF

 33 uF

 Already Installed



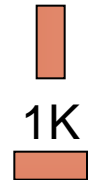
TuT-xx v1.0 - Low Band 2-23-2012

WWW.QRPKITS.COM

Ft Tuthill DC CW Xcvr - Low Band

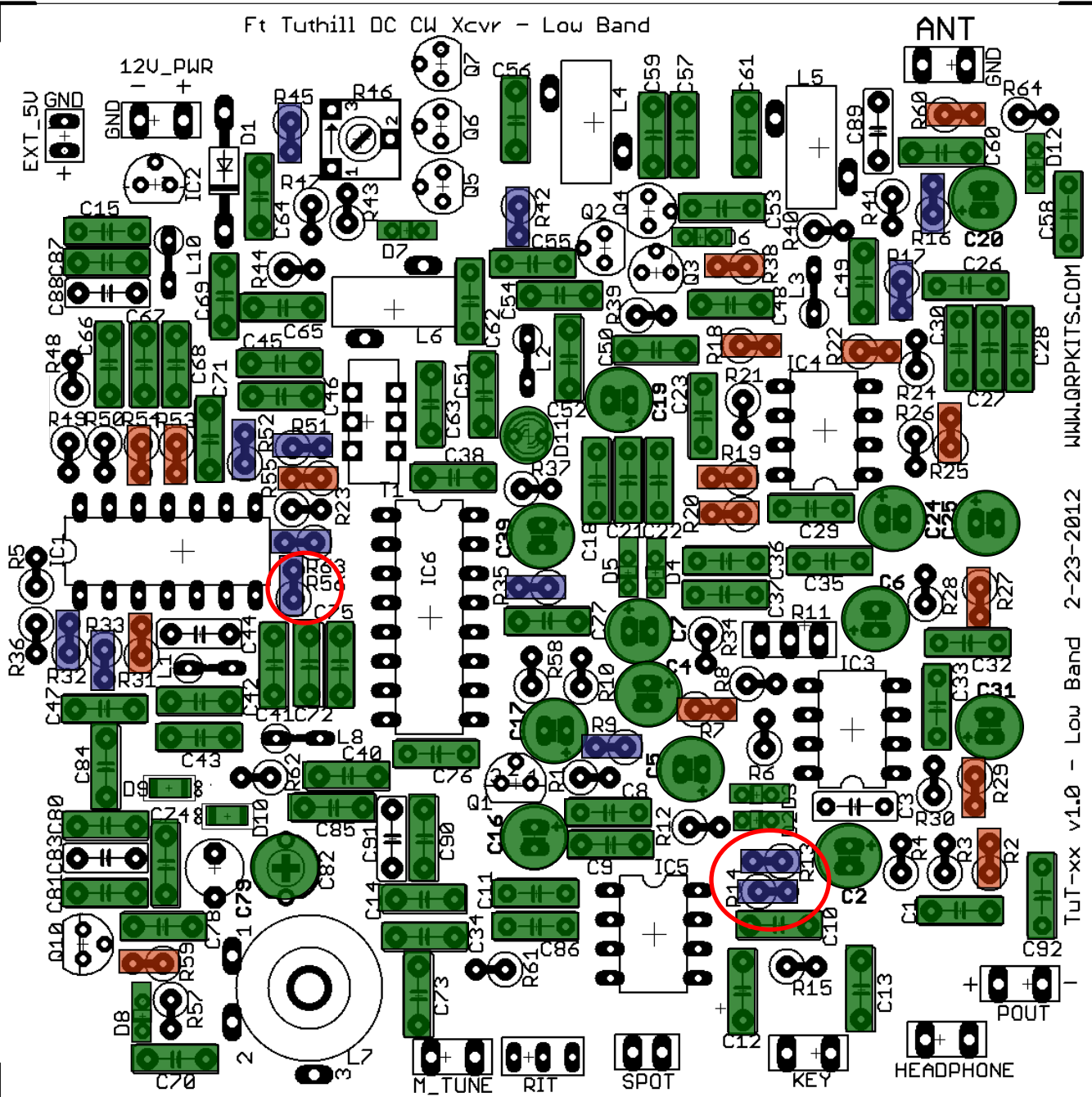


22K



1K

Already
Installed



Double check
direction of
red circled
resistors

WWW.QRPKITS.COM

TuT-xx v1.0 - Low Band 2-23-2012

Ft Tuthill DC CW Xcvr - Low Band

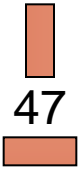
wire loop



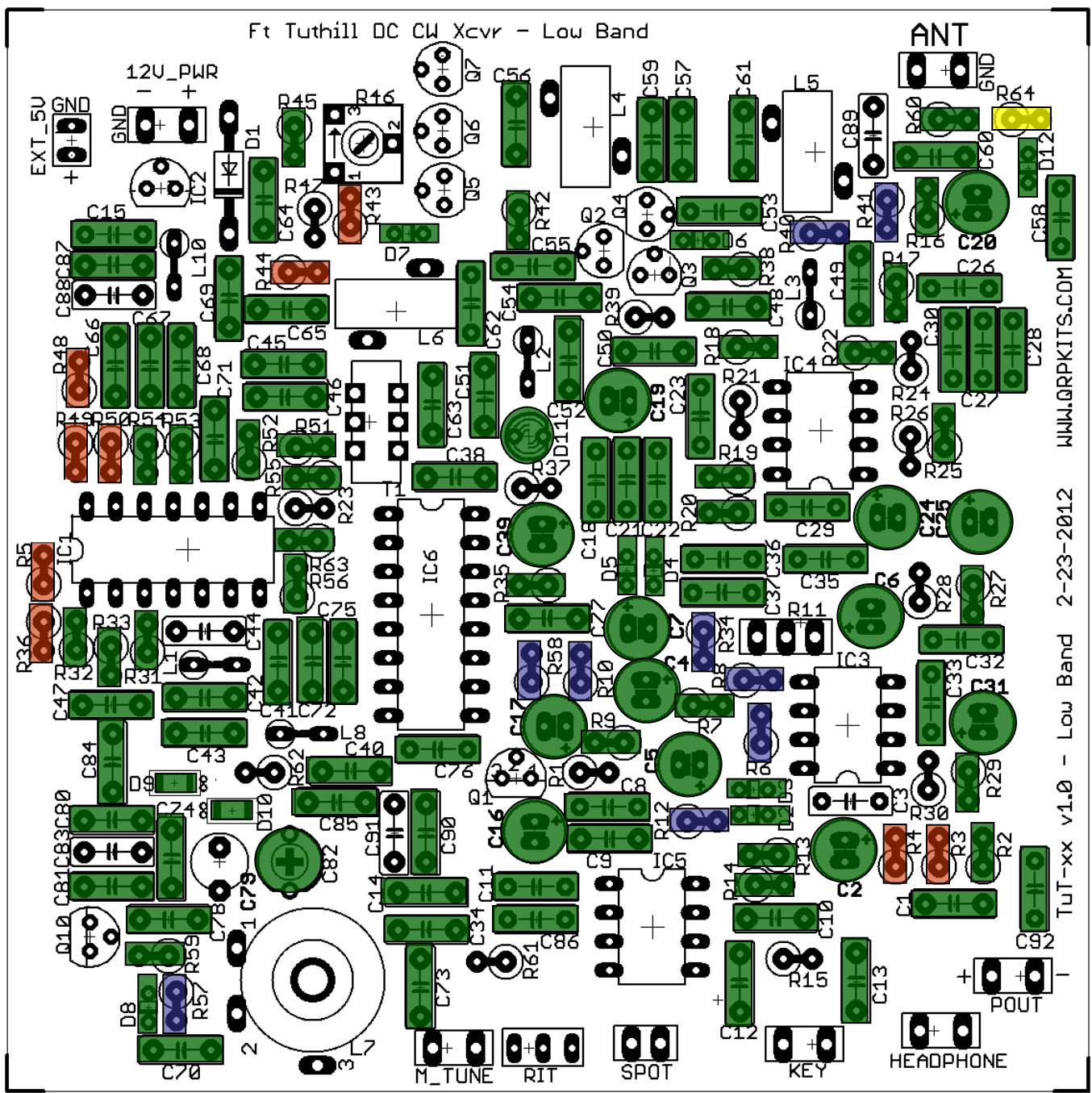
100K



47



Already Installed



TuT-xx v1.0 - Low Band 2-23-2012

WWW.QRPKITS.COM

ANT

HEADPHONE

KEY

SPOT

RIT

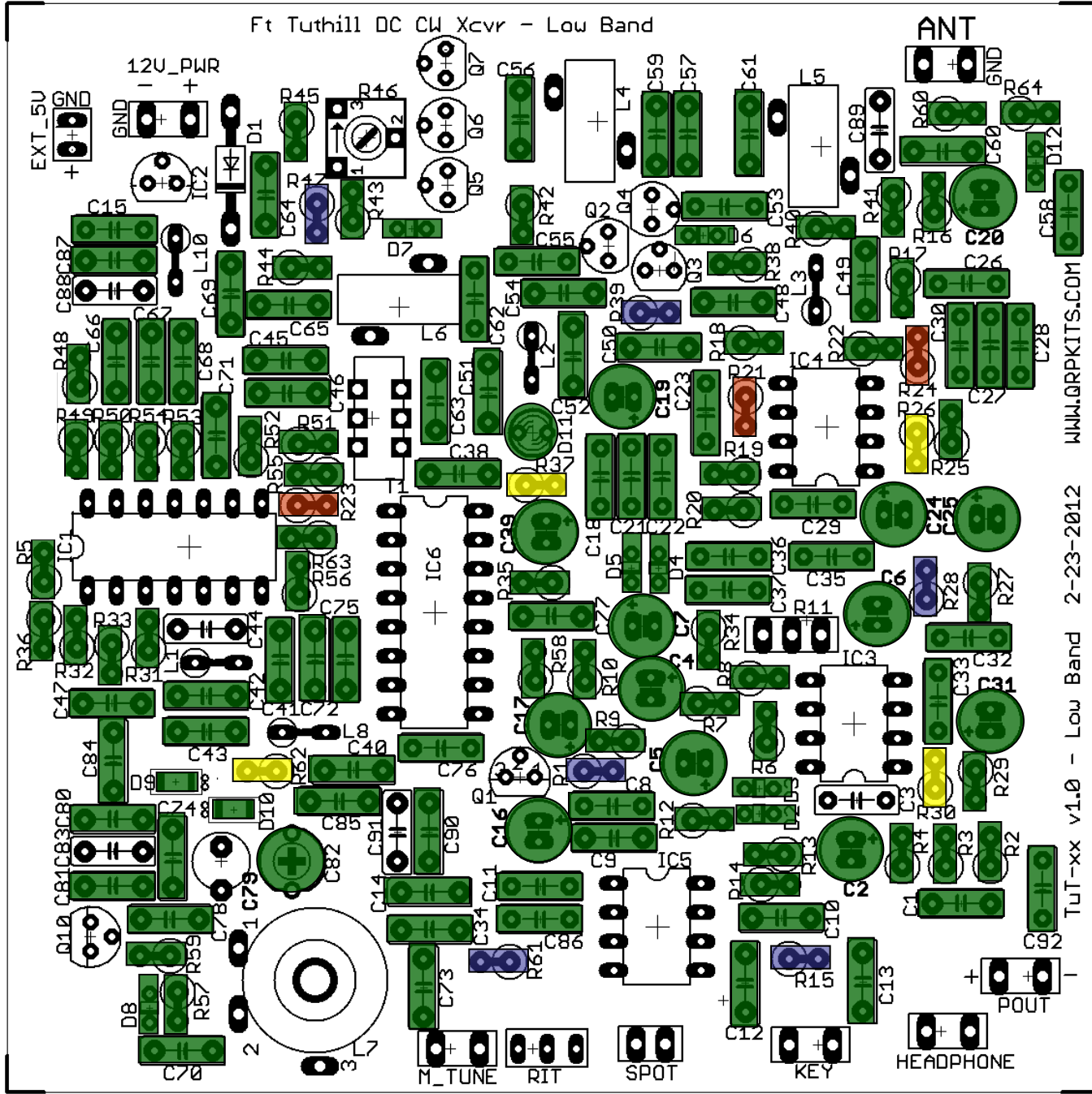
M_TUNE

POUT

Ft Tuthill DC CW Xcvr - Low Band

Legend for component values:

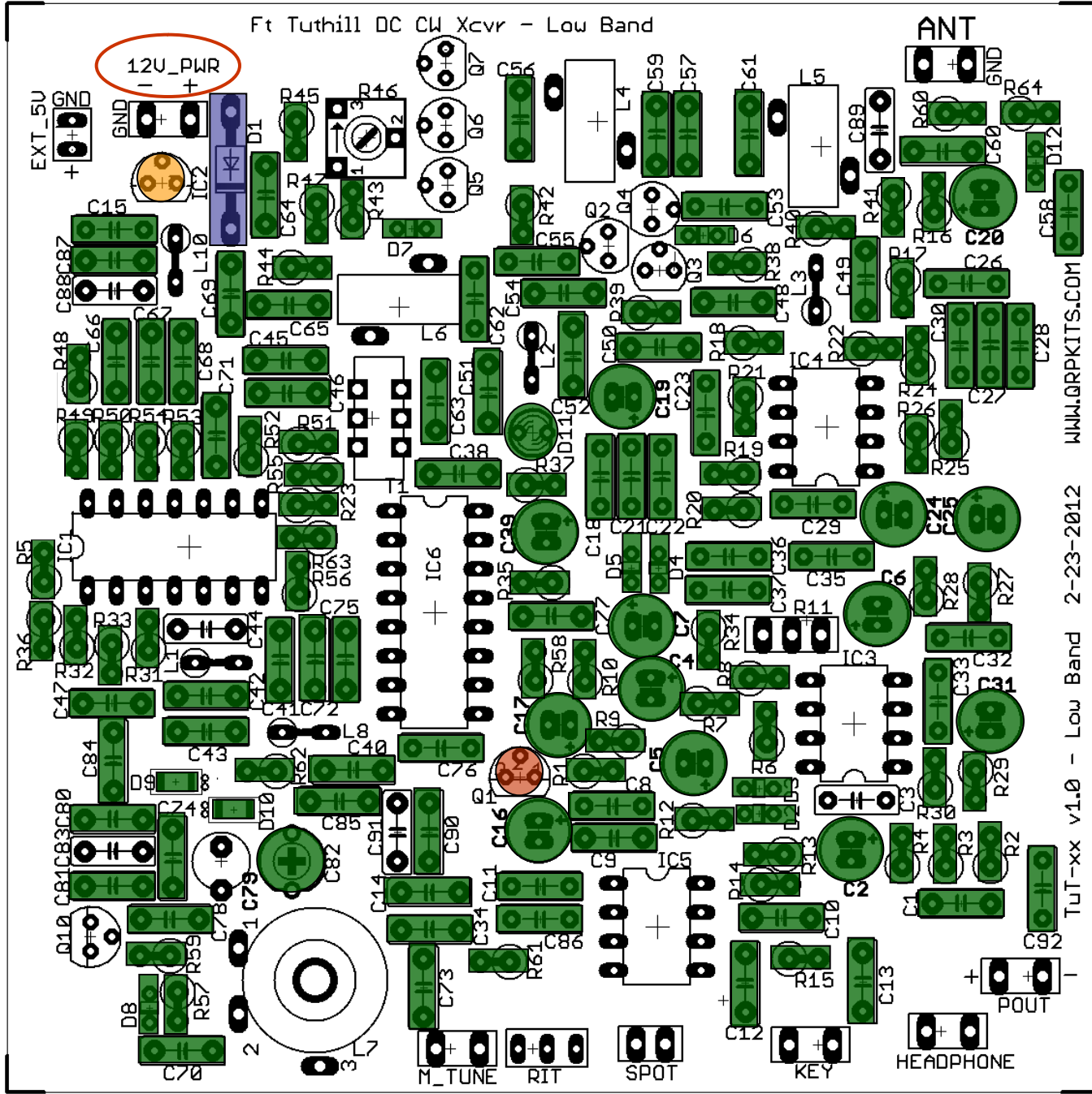
- 3.3K (Blue rectangle)
- 2.7K (Orange rectangle)
- 4.7K (Yellow rectangle)
- Already Installed (Green rectangle)



TuT-xx v1.0 - Low Band 2-23-2012

WWW.QRPKITS.COM

Ft Tuthill DC CW Xcvr - Low Band



1N4001

2N3904

78L05






Already Installed

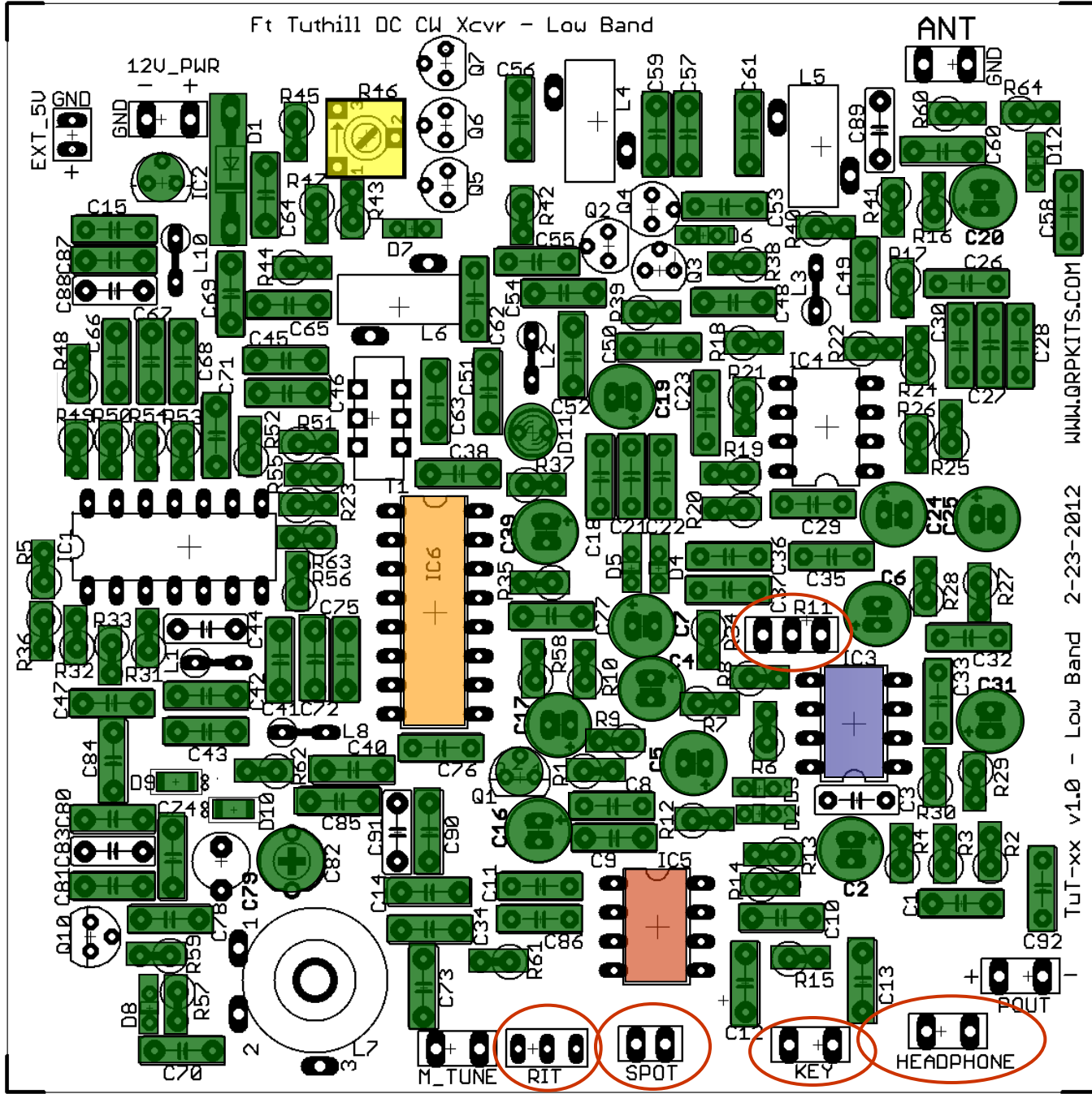
WWW.QRPKITS.COM

TuT-xx v1.0 - Low Band 2-23-2012

Ft Tuthill DC CW Xcvr - Low Band

ANT

-  5532
-  PIC12F508
-  74HC4053
-  10K Trim Pot
-  Already Installed



WWW.QRPKITS.COM

TuT-xx v1.0 - Low Band 2-23-2012

M_TUNE RIT SPOT KEY HEADPHONE P.OUTPUT

Ft Tuthill DC CW Xcvr - Low Band

ANT

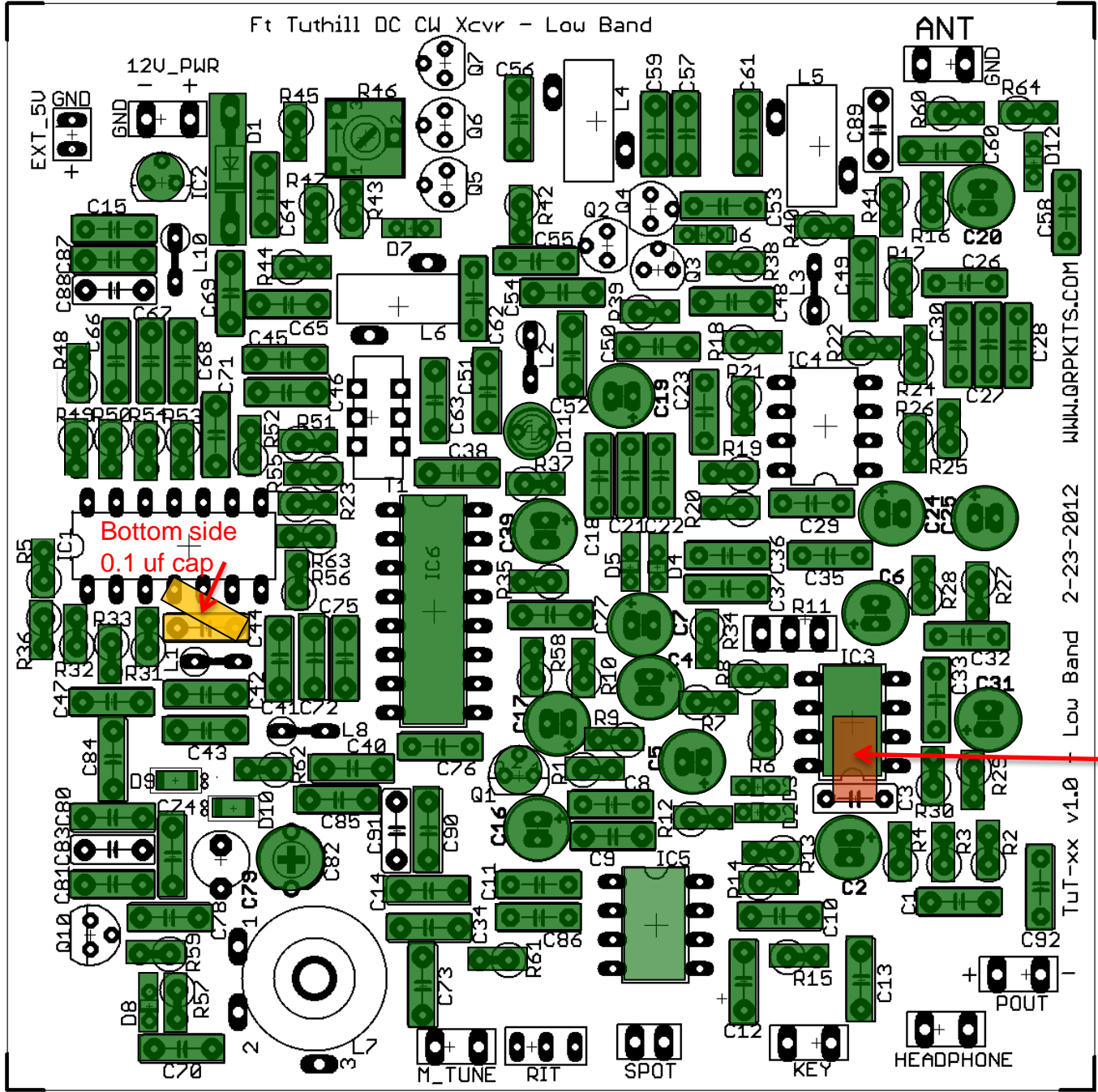
220 uF



0.1 uF



Already Installed



Bottom side
0.1 uf cap



Top side
220 uf cap



WWW.QRPKITS.COM

TuT-xx v1.0 - Low Band 2-23-2012

Ft Tuthill DC CW Xcvr - Low Band

22 uH choke



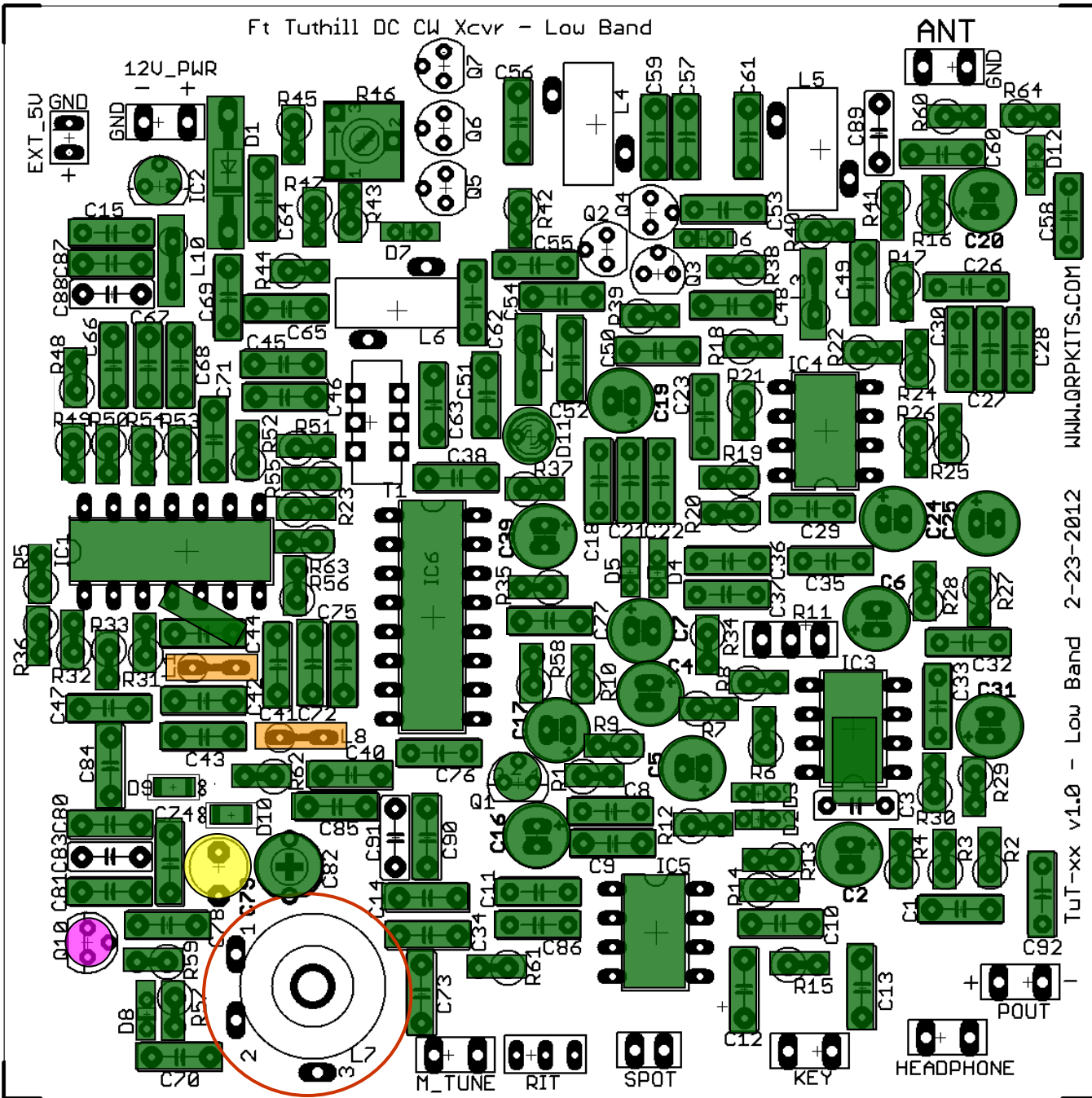
1000 pf poly



2N5485



Already Installed


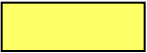





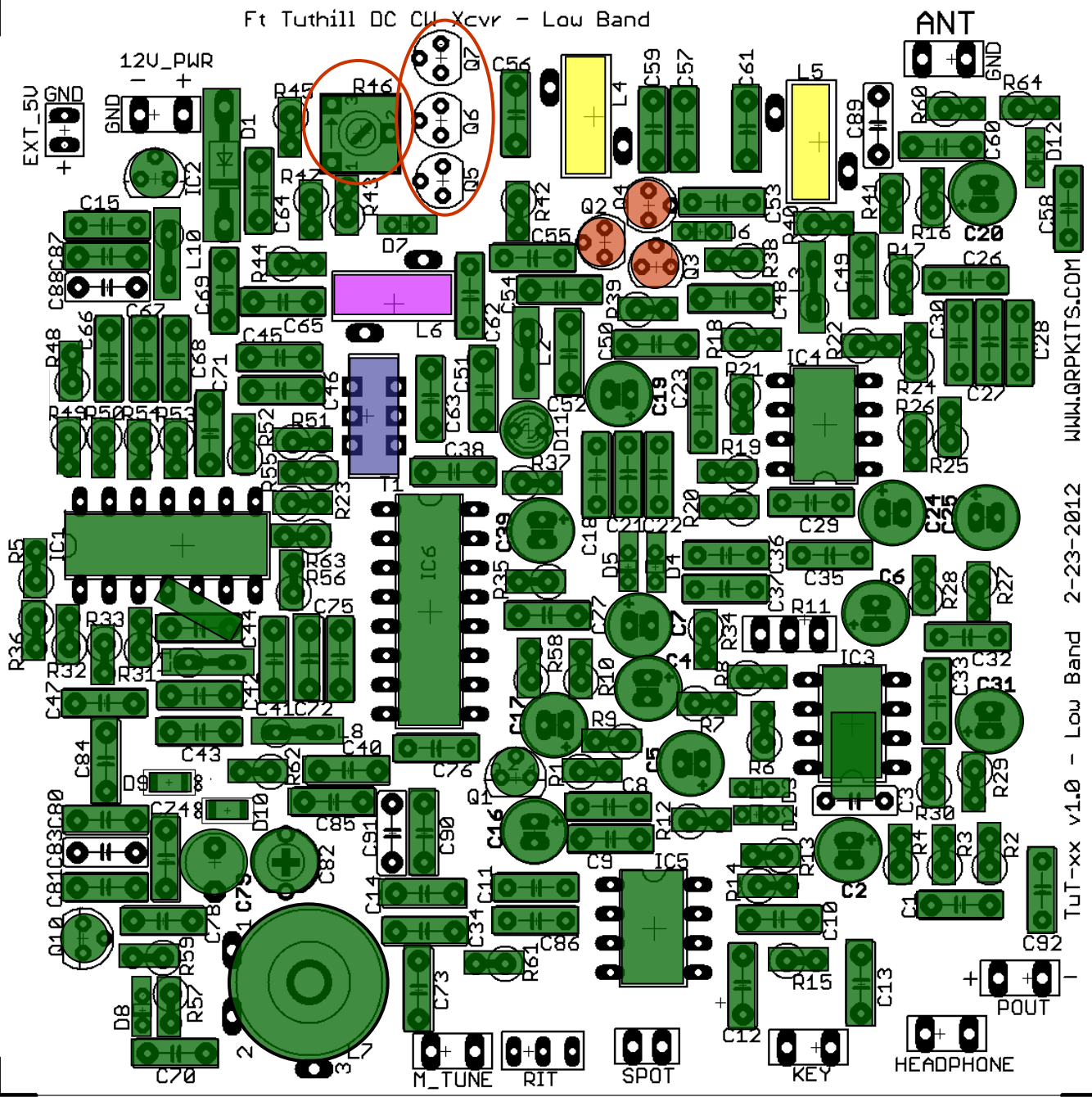
TuT-xx v1.0 - Low Band 2-23-2012

WWW.QRPKITS.COM

Ft Tuthill DC C/U Xcvr - Low Band

Legend for component types:

-  Already Installed
-  L4, L5
-  BS170
-  T1
-  L6



WWW.QRPKITS.COM

TuT-xx v1.0 - Low Band 2-23-2012