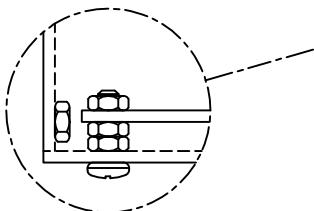


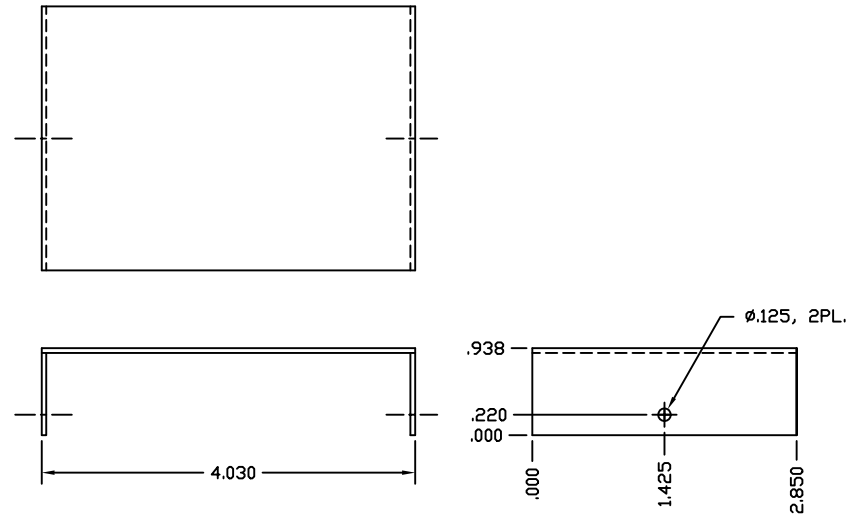
HOLE LEGEND
 A - ϕ .236
 B - ϕ .281
 C - ϕ .375
 D - ϕ .406

CHASSIS BOTTOM

BOTTOM - 1 ϕ - 3.90" X 2.725"
 SIDES - 2 ϕ .375" X " X 2.725"
 FRONT & BACK - 2 ϕ .875" X " X 3.90"
 MATERIAL - 1/16" THICK PC BOARD STOCK



THIS IS AN EASY WAY TO MOUNT THE BOARD USING 2 ϕ 4-40 NUTS AND A 3/8" LONG 4-40 SCREW UNDER EACH CORNER OF THE PCB. BE SURE TO USE RUBBER FEET UNDER YOUR CHASSIS, OR COUNTERSUNK 4-40 SCREWS



CHASSIS TOP

TOP - 1 ϕ - 4.03" X 2.85"
 SIDES - 2 ϕ .938" X 2.85"

MATERIAL - 1/16" THICK PC BOARD STOCK

VISIT [HTTP://WWW.QRPBUILDER.COM/DOWNLOADS/PCB_CHASSIS_A.PDF](http://www.qrpbuilder.com/downloads/pcb_chassis_a.pdf) FOR SPECIFIC CONSTRUCTION TECHNIQUES REGARDING PCB CHASSIS

UNLESS OTHERWISE SPECIFIED
 DIMENSIONS ARE IN INCHES
 TOLERANCES ARE:
 FRACTIONS DECIMALS ANGLES
 $\pm 1/32$.XX $\pm .015$ $\pm 1^\circ$
 .XXX $\pm .005$
 SURFACE FINISH $\sqrt{\quad}$
 BREAK EDGES .005-.020
 RADIUS OR CHAMFER

ITEM	REQ'D	DESCRIPTION	MAT'L
Hendricks QRP Kits			
TITLE DCxxB PCB CHASSIS			
DRAWN	WA4MNT	SCALE FULL	DATE 04/10/11
SHEET 1	OF 1	REF.	DWG.#